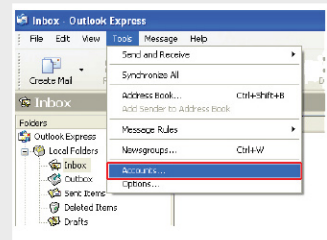
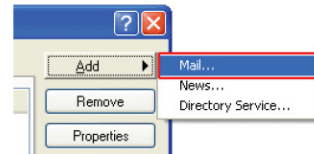


Click 'Tools'
Click 'Accounts'



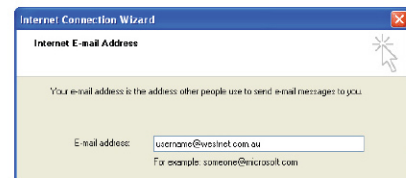
Click the 'Add' button
Click 'Mail...'



Type your name



**Type your full email address, eg:
user@yourdomain.com**



Select 'POP3' from the drop-down menu

Type in mail.yourdomain.com in the 'Incoming Mail (POP3)' box
Type your ISP's mail server in the 'Outgoing Mail (SMTP)' box (likely mail.yourISP.com)

